

**ITEM 36. PARKING – TIMED PARKING – BUCKLAND AND BLACKFRIARS  
STREETS CHIPPENDALE**

**TRIM RECORD NO: 2017/400729**

**RECOMMENDATION**

It is recommended that the Committee endorse the reallocation of parking in the following locations in Chippendale:

- (A) Eastern side of Buckland Street, between the points 24.3 metres and 46.4 metres north of Blackfriars Street (four car spaces), as “P15 Minutes 7.30am-11am, 3pm-6.30pm, Mon-Fri” and “1P 11am-3pm, Mon-Fri”,
- (B) Eastern side of Buckland Street, between the points 46.4 metres and 90.1 metres north of Blackfriars Street (seven car spaces), as “1P 8am-10pm, Permit Holders Exceeded Area 32”; and
- (C) Northern side of Blackfriars Street, between the points 26.9 metres and 76.5 metres east of Buckland Street (eight car spaces), as “1P 8am-10pm, Permit Holders Exceeded Area 32”.

**VOTING MEMBERS FOR THIS ITEM**

<b><i>Voting Members</i></b>	<b><i>Support</i></b>	<b><i>Object</i></b>
City of Sydney		
Roads and Maritime Services		
NSW Police – Redfern LAC		
Representative for the Member for Newtown		

**DECISION**

**BACKGROUND**

University of Technology Sydney (UTS) Childcare Centre has requested the relocation of the existing 15 minute parking restriction on the eastern side of Buckland Street, Chippendale, further south to a new location near the intersection of Blackfriars Streets.

UTS Childcare Centre has been recently redeveloped and the proposed relocation of the 15 minute parking restriction would better service the drop-off and pick-up needs of the new childcare centre.

**COMMENTS**

**Buckland Street, Chippendale**

The kerb space on the eastern side of Buckland Street, Chippendale, adjacent to the new University of Technology Sydney (UTS) Childcare Centre, is currently signposted either as “1P 8.30am-6pm, Mon-Fri, 8.30am-12.30pm, Sat” or “P15 Minutes 8.30am-10pm, Mon-Fri”.

It is proposed to reallocate the kerb space on the eastern side of Buckland Street, just north of the intersection with Blackfriars Street, as "P15 Minutes 7.30am-11am, 3pm-6.30pm, Mon-Fri" and "1P 11am-3pm, Mon-Fri". This will provide for drop-off and pick-up operations at the new childcare centre and would enable the removal of the previously existing all day 15 minute parking further north in Buckland Street.

It is also proposed to change the existing "1P 8.30am-6pm, Mon-Fri, 8.30am-12.30pm, Sat" restriction on the eastern side of Buckland Street, adjacent to the Centre, as "1P 8am-10pm, Permit Holders Excepted Area 32". This change will align with other restrictions in the immediate area and improve availability of parking for residents and visitors to the area.

### **Blackfriars Street, Chippendale**

The kerb space on the northern side of Blackfriars Street, Chippendale, adjacent to the new UTS Childcare Centre, is currently signposted either as "No Parking 7.30am-6pm, Mon-Fri, 7.30am-12.30pm, Sat" or "1P 8am-6pm, Mon-Fri", with a small section of "No Parking" across a driveway.

Eastbound access from Blackfriars Street to Abercrombie Street is not available (ie because of a road closure for eastbound flow) so all eastbound traffic in the street needs to proceed into Sutherland Lane, a very narrow laneway (2.1 metres wide), or conduct a U-turn to return to Buckland Street. Therefore the use of this street to access the new Childcare Centre would cause disruption to adjacent residents and safety concerns at driveways opposite. It is for these reasons that this street is not suitable for drop-off and pick-up operations for the new Childcare Centre.

Given the above safety issues, it is proposed to reallocate the existing "No Parking" and 1P restriction on the northern side of Blackfriars Street, as "1P 8am-10pm, Permit Holders Excepted Area 32". This change will align with other restrictions in the immediate area and improve availability of parking for residents and visitors to the area.

The development of the new childcare centre includes the removal of a redundant driveway in Blackfriars Street. This would result in an increase of one parking space for residents and visitors to the area.

### **CONSULTATION**

The City notified local residents and businesses in the area. There were 427 letters sent out with five responses supporting the proposal and four responses opposing the proposal.

The submissions supporting the proposal noted that the changes would better service the drop-off and pick-up needs of the new childcare centre.

The submissions opposing the proposal noted that the changes would increase parking demand amongst residents ineligible for parking permits. The submissions also noted that the changes could reduce the travel lanes in Blackfriars Street to a one-way thoroughfare.

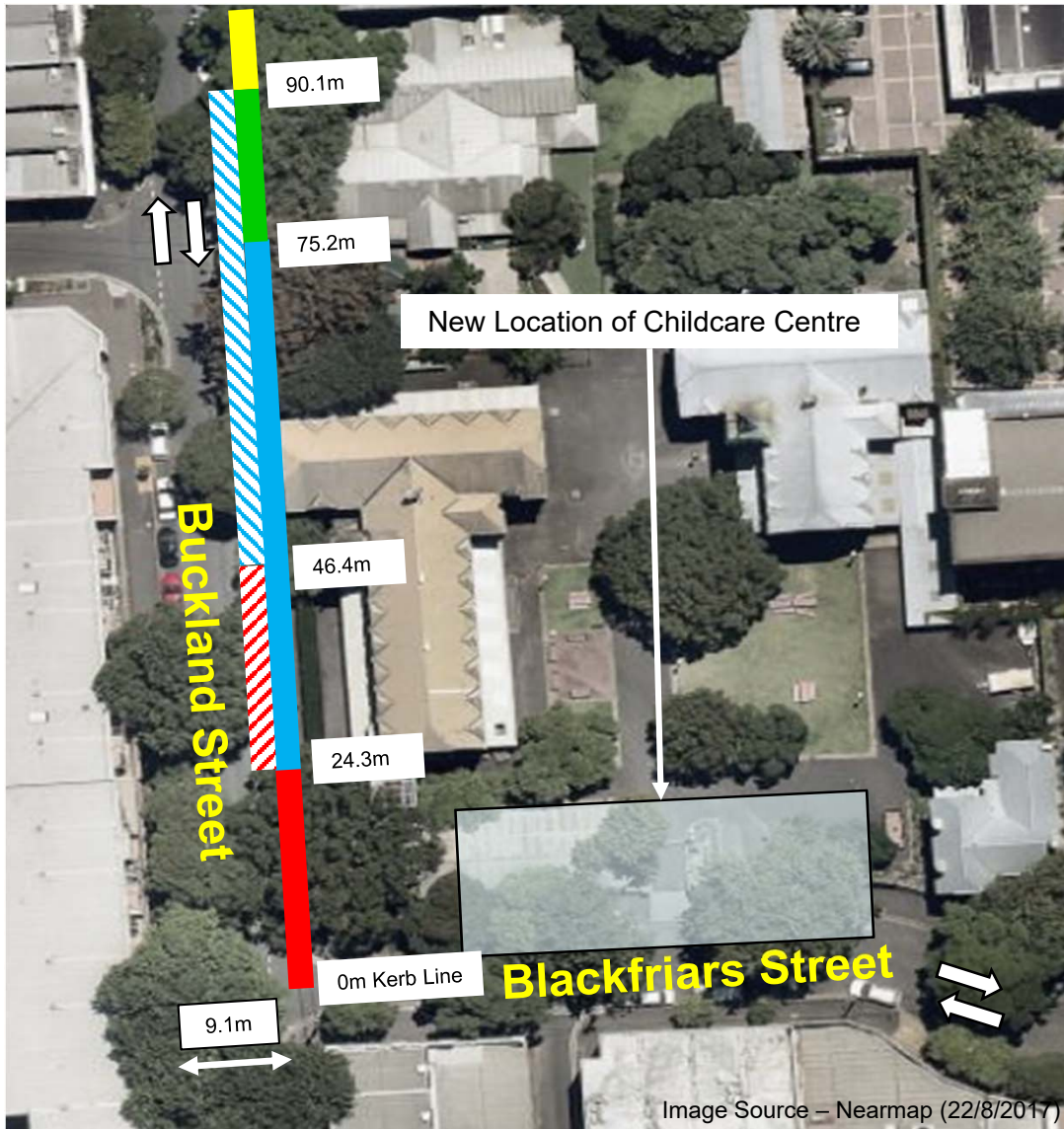
However, there is sufficient road width to maintain two-way travel along Blackfriars Street and given that the street is a partial dead-end (for eastbound traffic) and has very low traffic volumes, low vehicle speed and only provides local access then the proposal should proceed.

**FINANCIAL**

Funds are available in the current budget.

Parking – Timed Parking – Buckland and Blackfriars Streets Chippendale

Manbir Singh, Senior Traffic Engineer



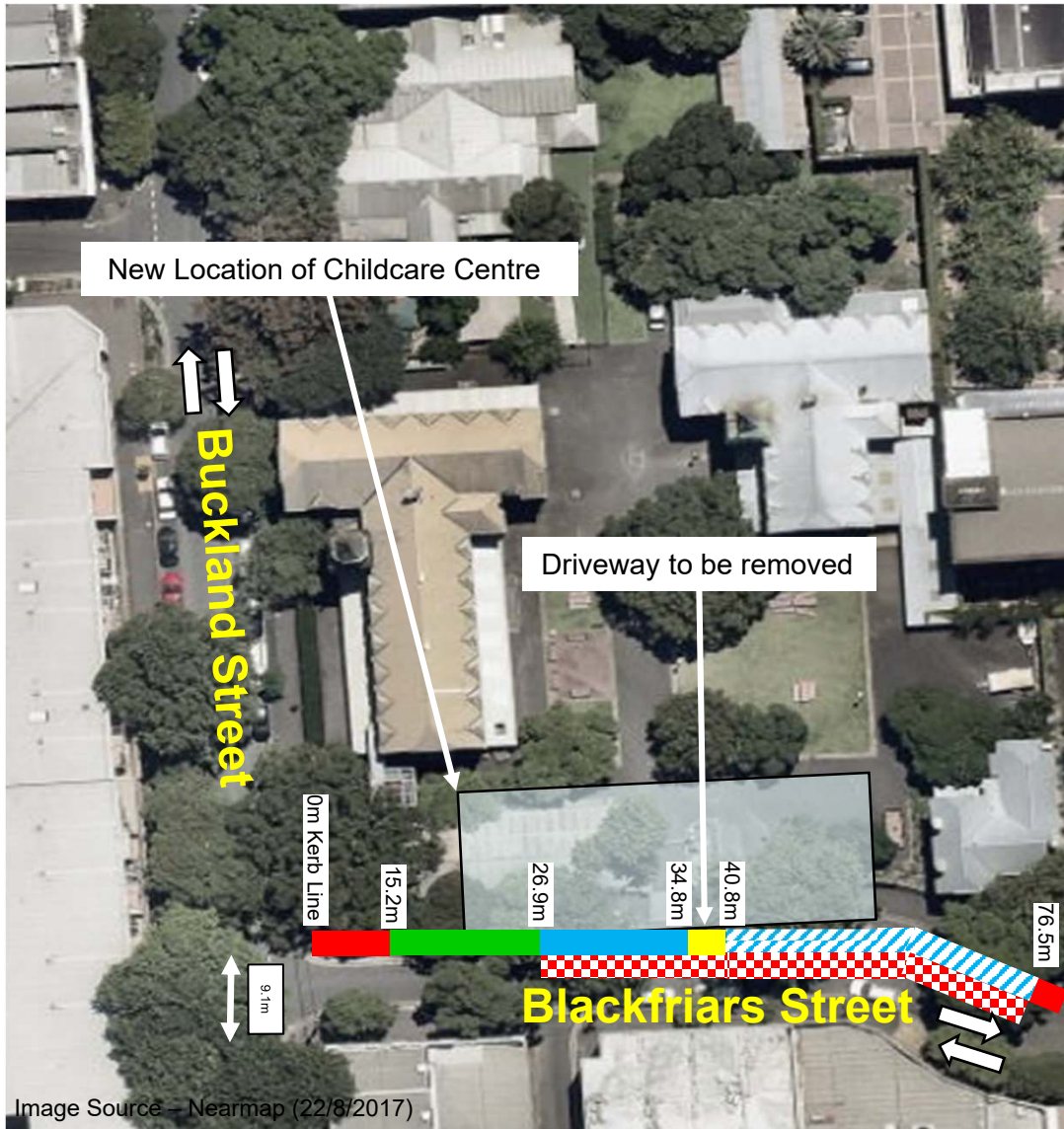
**LEGEND**

- "No Stopping" (Existing)
- "1P 8.30am-6pm, Mon-Fri; 8.30am-12.30pm, Sat" (Existing)
- "1P 8am-10pm; Permit Holders Excepted Area 32" (Proposed)
- "P15 Minutes 8.30am-10pm, Mon-Fri" (Existing)
- "P15 Minutes 7.30am-11am, Mon-Fri; 3pm-6.30pm, Mon-Fri; and 1P 11am-3pm, Mon-Fri" (Proposed)
- "1P 8am-10pm; Permit Holders Excepted Area 32" (Existing)

**PROPOSAL**

**PROPOSED PARKING CHANGES  
BUCKLAND STREET NORTH OF BLACKFRIARS STREET  
CHIPPENDALE**





**LEGEND**

-  "No Stopping" (Existing)
-  "No Parking Authorised Car Share Vehicles Excepted Zone GG" (Existing)
-  "1P 8am-6pm, Mon-Fri" (Existing)
-  "No Parking" (Existing)
-  "No Parking 7.30am-6pm, Mon-Fri; 7.30am-12.30pm, Sat" (Existing)
-  "1P 8am-10pm; Permit Holders Excepted Area 32" (Proposed)



**PROPOSAL**

**PROPOSED PARKING CHANGES  
BLACKFRIARS STREET EAST OF BUCKLAND STREET  
CHIPPENDALE**



